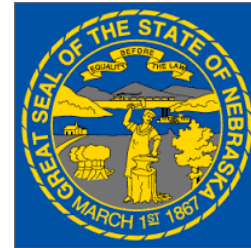


# ProPhorce™ SR 130 layers

University of Nebraska. USA, 2017



## Objective:

- ➔ To compare the results on performance, eggshell quality and Ca/P digestibility of SR130 vs. control in older laying hens

## Treatments:

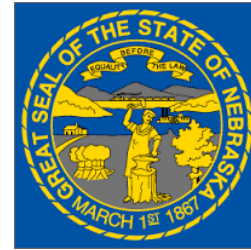
- ➔ Group 1 received standard diet
- ➔ Group 2 received standard diet + ProPhorce™ SR 130 at 500 grams/ton.

<b>Total number of broilers</b>	144
<b>Number of treatments</b>	2
<b>Replicates per treatment</b>	12 pens
<b>Layers per replicate</b>	6 layers
<b>Age of layers on arrival</b>	86 weeks
<b>Trial duration</b>	14 weeks
<b>Breed of layers</b>	Bovan White Leghorn

<b>Feed Ingredients</b>	<b>% of Diet</b>
<b>Corn</b>	54.20
<b>Soybean Meal</b>	19.61
<b>DDGS</b>	10.00
<b>Limestone</b>	11.28
<b>Vegetable Oil</b>	3.14
<b>Dicalcium Phosphate</b>	1.00
<b>Salt</b>	0.32
<b>Vit/Trace Mineral Premix</b>	0.20
<b>Methionine</b>	0.12
<b>Lysine</b>	0.04
<b>Feed Nutrients</b>	
<b>ME, Kcal/kg</b>	2800
<b>Protein, %</b>	16.2
<b>Lysine, %</b>	0.80
<b>Methionine, %</b>	0.39
<b>TSAA, %</b>	0.70
<b>Ca, %</b>	4.6
<b>Available P, %</b>	0.35

# ProPhorce™ SR 130 layers

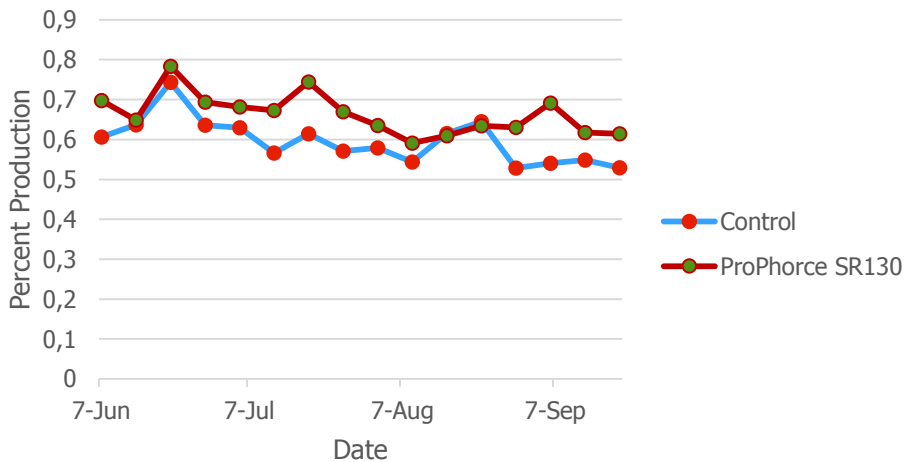
University of Nebraska. USA, 2017



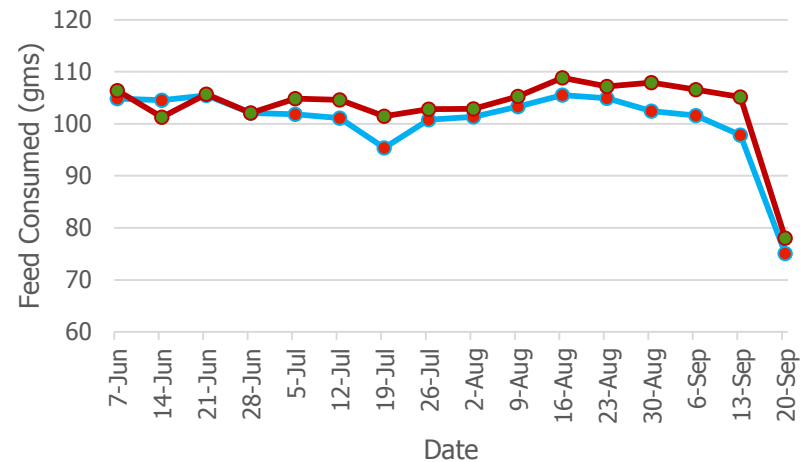
## Results

Parameter	Control	ProPhorce SR 130	SR 130 /Control
Feed Intake, g/hen/day	102.2	104.88	102.6%
Egg Production, % hen day	60.02	66.68	111.1%

Average Egg Production

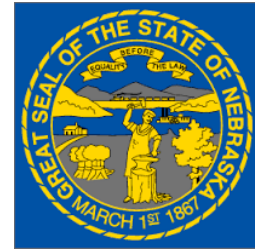


Average Feed Consumption



# ProPhorce™ SR 130 layers

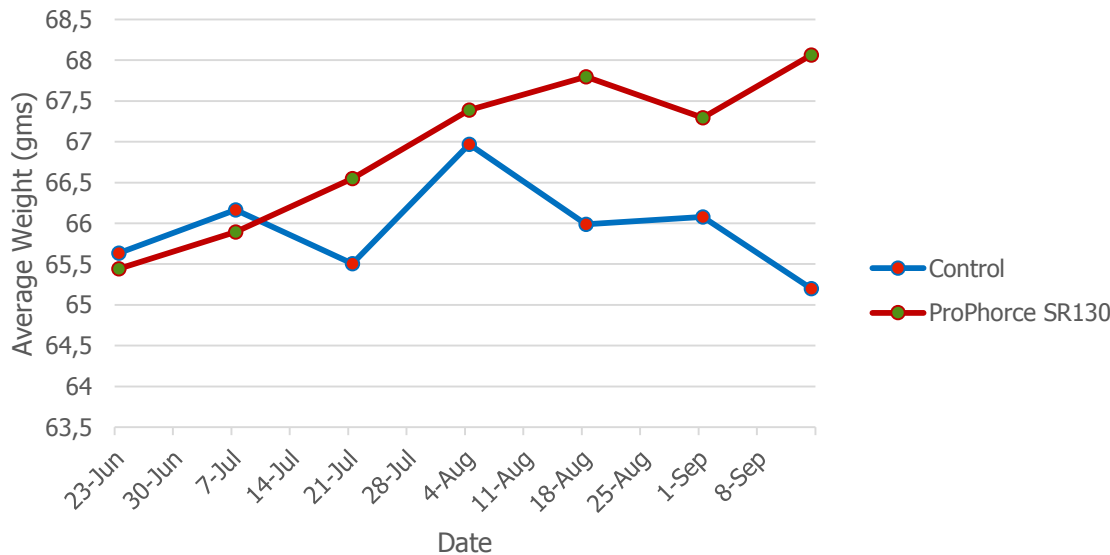
University of Nebraska. USA, 2017



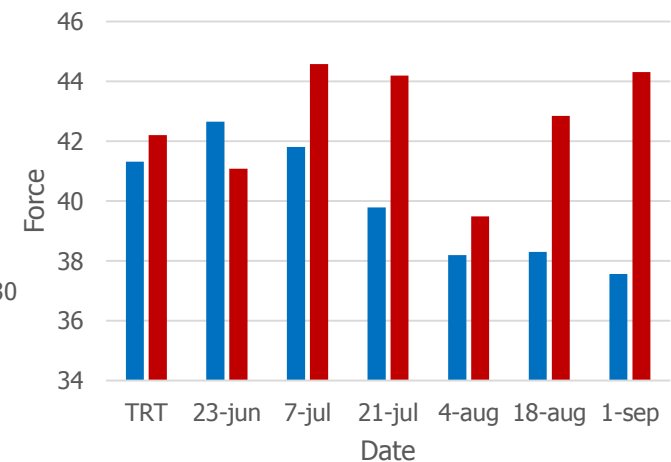
## Results

Parameter	Control	ProPhorce SR 130	SR 130 /Control
Egg wt., grams	65.93	66.92	101.5%
Egg Mass, g/hen/day	39.56	44.62	112.8%
Egg Shell, %	13.45	13.40	99.6%
Egg Breaking Strength, kg	39.95	42.67	106.8%

Average Egg Weight

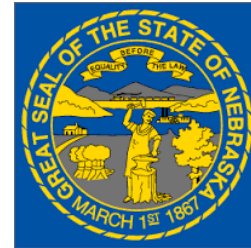


Average Breaking Strength



# ProPhorce™ SR 130 layers

University of Nebraska. USA, 2017



## Results

Parameter	Control	ProPhorce SR 130	SR 130 /Control
Egg Breaking Strength, kg	39.95	42.67	106.8%
Ca Dig., %	25.91	31.94	123.2%
P Dig., %	25.75	28.43	110.4%

